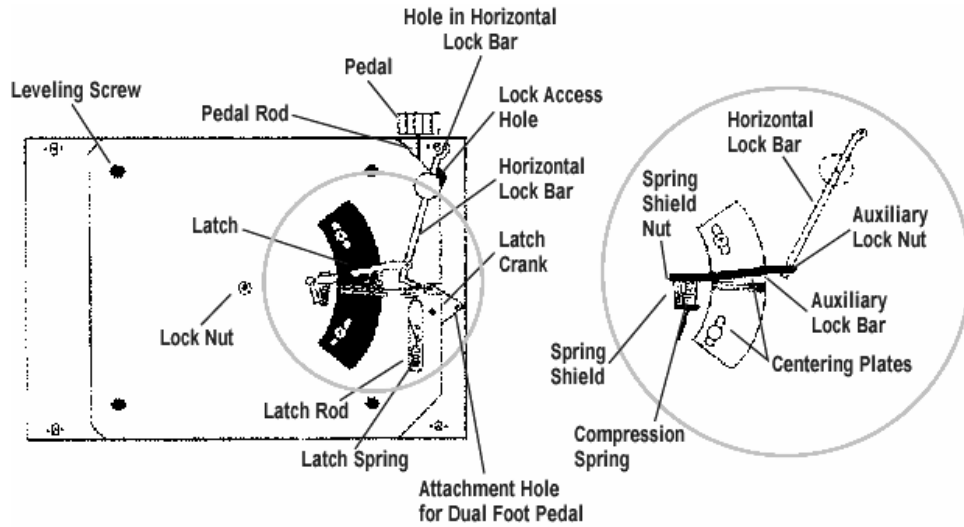


TIMES – 2 SPEED FILE BASE CONVERSION INSTRUCTIONS

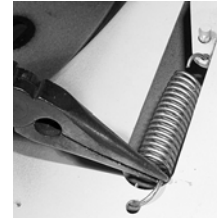


STEP 1

- ✓ Turn Base on Side with Foot Pedal up to expose underside of Base.
- ✓ Items to Remove:

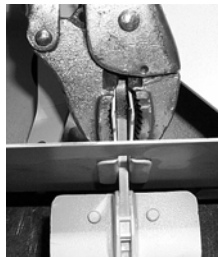


Latch Spring
Using Pliers remove spring.



Pedal Rod

To remove the Pedal Rod use a file or hand grinder to make the metal indents smooth. Push Pedal Rod through hole.

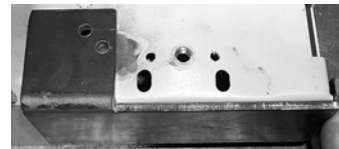


Foot Pedal

Using Vise Grips, squeeze the metal Foot Pedal Mounting Bracket to remove whole assembly.

STEP 2

- ✓ Turn Base Over flat.

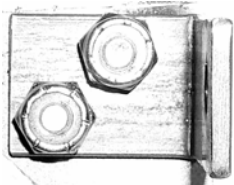


- ✓ Place Drill Template at the right front corner of base. The Template should be covering the Foot Pedal hole. Using the template as a guide, drill two (2) ¼ holes, using a ¼ inch drill bit.

TIMES – 2 SPEED FILE BASE CONVERSION INSTRUCTIONS

STEP 3

- ✓ Turn Base on Side with Foot Pedal up to expose underside of Base.



- ✓ Mount new Pivot Bracket to underside of base by fastening bracket with two (2) 1/4-20 x 1/2 hex head bolts and two (2) nylon lock nuts.

STEP 4

- ✓ Attach Bottom Lock Rod to threaded stud on Pivot Weld Assembly. Use one (1) 10-32 Hex Nylon Lock Nut to attach; bring nut tight and back off 1/4 turn, to allow Lock Rod to move freely.



- ✓ Attach hook end of Pivot Actuating Rod through the bottom hole of the Pivot Weld Assembly.
- ✓ Slide new Bottom Lock Rod through Lock Rod Hole on Base. From underneath the base, slide the end of the Bottom Lock Rod with two holes first.
- ✓ Attach Bottom Lock Rod to Pivot Weld Assembly by using one (1) 5/16 x 1/4 Shoulder bolt and one (1) 5/16 Stover lock nut. Bring nut tight and back off 1/4 turn.



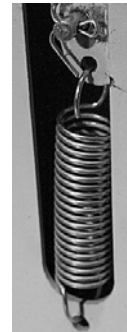
STEP 5

- ✓ Attach new Pivot Actuating Rod through Catch Crank Plate, use one (1) 1/8 x 3/4 cotter pin to secure.



STEP 6

- ✓ Install the new Spring by inserting one end into the bottom hole of the Catch Crank Plate first. Then attach the other end into the Base frame hole.



STEP 7

- ✓ Secure Horizontal Lock Bar in open position by using one (1) 12 x 3/4 Hex Self drilling Screw, this will hold Bar open.



STEP 8

- ✓ Turn Base back over.
- ✓ Attach new Post to Base.

STEP 9

- ✓ Follow **STEP 18 – LOCK ASSEMBLY** in the *Times – 2 Speed Files Installation Instructions*.