

# FASTPIC4

## Inventory Management Software



### FastPic™ Software Features

- Rugged SQL database support including Oracle 7, 8 and Microsoft SQL Server 7, 2000 and MSDE
- From a single workstation to multiple workzones
- Windows 95, 98, 2000 (recommended) & NT 4.0 platforms
- TCP/IP network
- ODBC compliant
- Open protocols for easy, fast and low risk implementation
- Customizable toolbars allow every user to have buttons readily accessible to reflect their exact responsibilities
- Integrates any one or combination of: shelving, rack, pick-to-light, Vertical Lift Modules (VLMs), horizontal and vertical carousels, and automated carousel inserter/extractor robotic systems
- Photo database can be used to visually verify each specific SKU. Ideal for operations concerned with accuracy and/or employee turnover
- Internet connectivity for HTML-based help files, problem reports, feedback forms, support requests, software updates, downloads, etc.
- Full bar code implementation

### Partial Minimum Hardware Requirements:

- Intel Pentium 400mhz
- 128 MB RAM
- Monitor-capable of 800 by 600 resolution
- 800 MB free disk space
- CD ROM drive

FastPic Inventory Management Software is the business solution designed to grow with your business. From managing a single workstation system to multiple workzones, FastPic4 software may be configured to maximize your changing organization. In fact, a company can start with standard shelving and rack system and later grow to pick-to-light and automated storage and retrieval equipment. FastPic4 software allows you to manage and control your operations today and tomorrow.

### FastPic Key Benefits

*Reduces Inventory* - Real time inventory status and detailed managerial reports allow users to manage their operations efficiently. Ideal for facilities implementing JIT and Lean Manufacturing.

*Increases Throughput* - Whether optimizing and directing pickers with printed lists, or directing automated equipment using light directed picking systems, FastPic4 software uses batch picking and put-aways to increase workers efficiencies.

*Reduces Floor Space Requirements* - Advanced cubing algorithms allows users to maximize every square inch of storage space.

*Extends Order Cut-Off Times* - Increased efficiencies and being able to prioritize orders by carriers cut-off times allow orders to be processed much later.

*Increases Accuracy* - From creating efficient pick lists, to bar code verification to pick & put-to-light, users of FastPic4 often see accuracy levels rise to 99.99%.

*Increases Customer Satisfaction* - By having material on-hand, and orders picked accurately and timely you will be able to offer your customers increased levels of performance aiding in customer retention.

**FASTPIC**  
systems

207-854-8663 | [www.FastPicSystems.com](http://www.FastPicSystems.com)



## FastPic4 Base Package Functionality

### Management of Part Number Master Data:

- Create/delete/edit part numbers
- 50 character part number/also known as (aka)/description
- Support for pictures
- Multiple measure quantities
- Multiple section capacities
- Maximum quantity per section/location
- Reorder points/bulk reorder points
- Desired stock levels/bulk minimum stock level
- Import master part record - add/delete/update existing records
- Default tote/measure qty/section assignment
- Default storage device assignment

### Inventory Class Definition:

- Allows multiple classifications
- FIFO & LIFO
- Expiration date
- Lot number
- Random locations/fixed locations
- Prompts operator for empty location verification and release
- Automatic system location assignment
- Audit trail records (store and retrieve parts)
- Operator override of flagged locations/allocated locations
- Transaction log entry by inventory class

### Storage Devices Supported:

- Vertical carousels
- Vertical Lift Modules (VLMs)
- Horizontal carousels
- Shelving, rack & flow rack
- Pick & put-to-light devices
- Communications diagnostics
- May combine any combination of manual & automated storage devices

### Location Management:

- Edit/modify/delete locations
- Space management/maximization
- Transaction log entries for each type of transaction-store/retrieve/transfer
- Assignment of totes to locations
- Free space management
- Empty tote management
- Cycle counting by part/device/flagged locations
- Import cycle count list from host
- Pick banding support
- Add/remove/edit shelves

### Tote Management:

- Multiple configurations
- Dimensioned
- Load/unload totes to/from specific shelves, trays, carriers

### User Database:

- Create/delete/modify user rights
- Password protection
- Menu rights by function
- Restrict login to workstations
- User name put into transaction file
- Assign user supervisor privileges

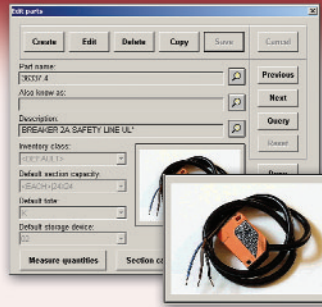
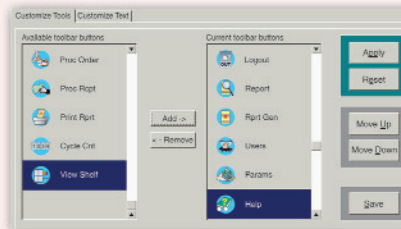


Photo database allows for fast and reliable part verification. Simple click enlarges the image.



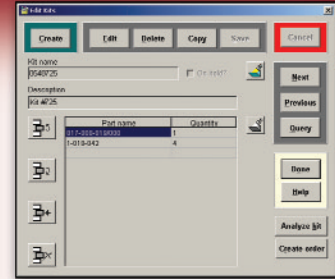
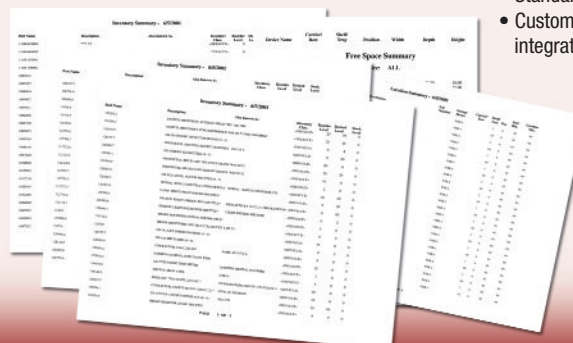
## FastPic4 Optional Modules

### Order Processing:

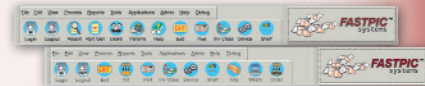
- Single order picking
- Batch order picking
- Parallel order picking - control multiple within the same workstation independently (multiple operators)
- Serial order picking - control multiple devices within the same workstation with one operator
- Continuous batch picking - automatic induction of new order when an order is complete to maintain batch
- Batch light support
- Static shelving and flow rack pick light support
- Print on-line and off-line pick lists
- Print packing lists and barcode labels

### Host Interface:

- Import parts, orders, cycle counts, kits and replenishment lists
- Allocate orders and replenishments as they are imported
- Print pick lists
- Print shortage reports
- Print barcode labels



Point and click kitting improves productivity by reducing stock picking time, balancing the work flow from multiple workzones, and increasing picking accuracy.



Each operator can create an individualized task toolbar from the software's approximately 50 commands that allows one-click access to functions that each person uses most frequently.

### Replenishment:

- Replenishments can be created:
  - Manually in edit receipts
  - Downloaded from the host through auto-import
  - Created on the fly by scanning in a part # and quantity
- Batch putaways allow for efficient use of the storage devices

### Kitting:

- Create bill of materials for ease of picking
- Kits can be downloaded from the host
- Kits can be batched and picked using the order processing module

### Bar Code Label Printing:

- User designed bar code labels
- Print labels during part retrieval and storage
- Many printers supported

### Tracking Area:

- Maintain locations without space management

### Weigh Scale Support

### Report Generator:

- Standard reports provided
- Custom reports can be created by integrating Crystal Reports®

A large selection of standard or customizable supervisory reports for fast and efficient operations.

B-1029-0-0601